



## The Ultimate Guide to Building Your Restaurant's Inventory Master Sheet



A Step-by-Step Approach to Effective Inventory Management



# Table of Contents

**Chapter 1: Introduction to Inventory Management**

**Chapter 2: Components of an Effective Inventory Master Sheet**

**Chapter 3: Step-by-Step Guide to Creating Your Master Sheet**

**Chapter 4: Tips for Accurate Data Entry**

**Chapter 5: Automating Your Inventory Process**

**Chapter 6: Regular Updates and Maintenance**

**Conclusion**

# Chapter 1: Introduction to Inventory Management



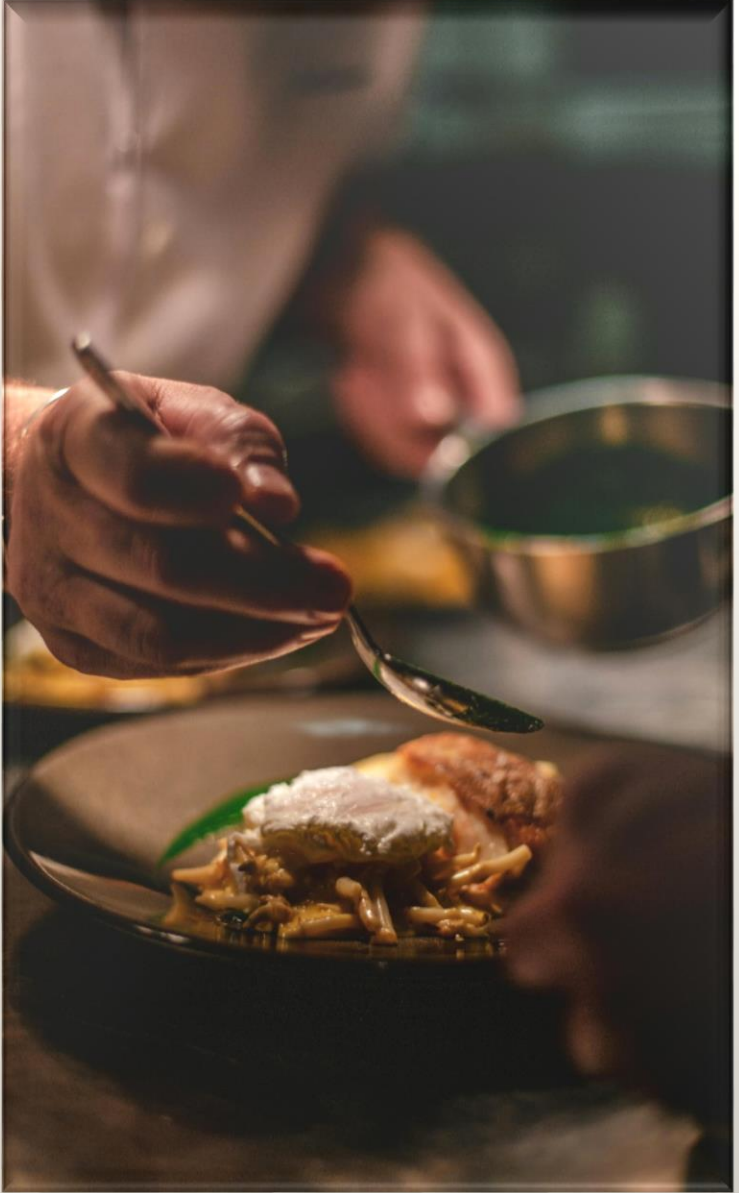
Inventory management is the backbone of a successful restaurant operation. It's more than just counting ingredients or tracking supplies; it's about ensuring that every aspect of your restaurant is operating efficiently and cost-effectively. Effective inventory management can mean the difference between a profitable business and one that struggles to break even.

In the restaurant industry, inventory represents one of the largest expenditures, with food and beverages typically accounting for 20-35% of total costs. Poor inventory management can lead to over-ordering, which ties up capital in unsold stock, or under-ordering, which can result in menu shortages and unhappy customers. Both scenarios are detrimental to your bottom line. By managing your inventory effectively, you can reduce waste, optimize your supply chain, and ensure that your restaurant runs smoothly.

## Key Benefits of Effective Inventory Management

When done right, inventory management offers several benefits:

- **Improved Food Cost Control:** By tracking your inventory accurately, you can monitor your food costs in real-time. This helps you identify trends, spot discrepancies, and make informed purchasing decisions that keep costs down.
- **Better Forecasting and Purchasing Decisions:** With a clear understanding of your inventory levels, you can forecast demand more accurately and avoid overstocking or running out of key ingredients.
- **Enhanced Ability to Negotiate with Suppliers:** When you know your inventory needs, you can negotiate better prices and terms with your suppliers, as you'll have data to back up your requests.
- **Increased Overall Profitability:** Efficient inventory management leads to less waste, lower food costs, and more satisfied customers—all of which contribute to higher profits.



## Key Benefits of Effective Inventory Management

When done right, inventory management offers several benefits:

- **Improved Food Cost Control:** By tracking your inventory accurately, you can monitor your food costs in real-time. This helps you identify trends, spot discrepancies, and make informed purchasing decisions that keep costs down.
- **Better Forecasting and Purchasing Decisions:** With a clear understanding of your inventory levels, you can forecast demand more accurately and avoid overstocking or running out of key ingredients.
- **Enhanced Ability to Negotiate with Suppliers:** When you know your inventory needs, you can negotiate better prices and terms with your suppliers, as you'll have data to back up your requests.
- **Increased Overall Profitability:** Efficient inventory management leads to less waste, lower food costs, and more satisfied customers—all of which contribute to higher profits.

## Challenges in Inventory Management

Despite its importance, inventory management in restaurants is not without challenges. These include:

- **Perishable Goods:** Unlike many other industries, restaurants deal with perishable goods that have a limited shelf life. This adds an extra layer of complexity, as you must balance purchasing enough to meet demand without overstocking.
- **Human Error:** Manual inventory processes are prone to human error, from miscounting stock to incorrectly entering data.
- **Inconsistent Usage Rates:** Ingredients may not be used at a consistent rate, making it difficult to predict how much stock you need.
- **Supplier Issues:** Delays, shortages, or price fluctuations from suppliers can throw off your inventory plans.

An inventory master sheet is a powerful tool that can help you overcome these challenges by providing a structured way to track and manage your stock.

# Chapter 2: Components of an Effective Inventory Master Sheet

An effective inventory master sheet is more than just a list of items; it's a comprehensive document that tracks every aspect of your stock. Here are the essential components to include:

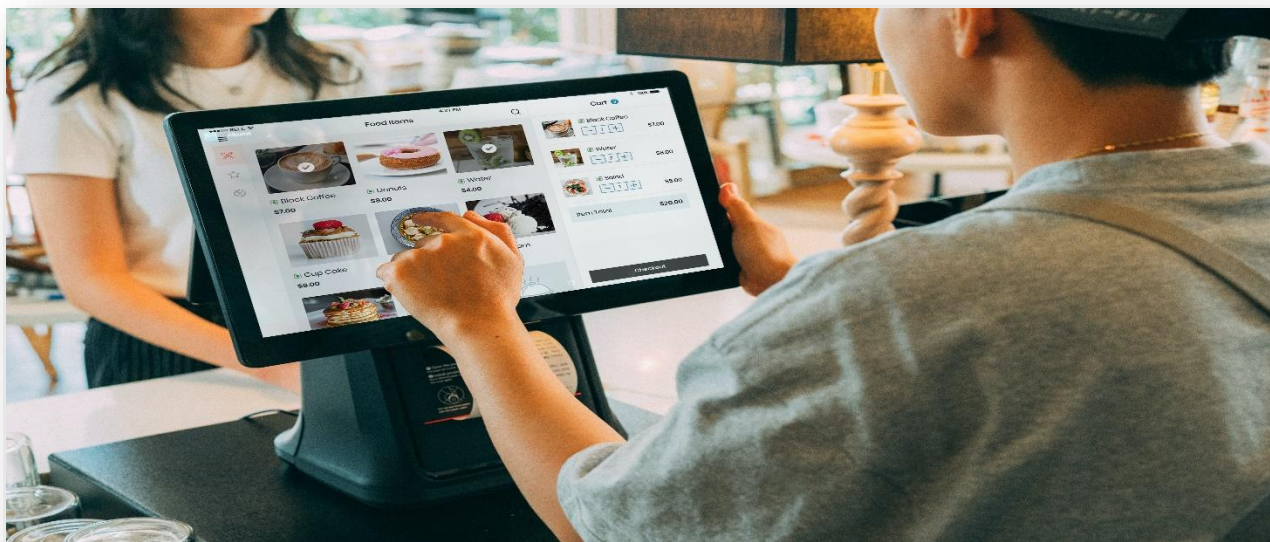
**Inventory Categories:** Group items into categories such as perishables, non-perishables, beverages, cleaning supplies, etc. This makes it easier to track and manage your inventory.

**Item Descriptions and SKU Numbers:** Provide a clear description of each item, including size, brand, and any specific details. Assigning SKU (Stock Keeping Unit) numbers helps in easily identifying and tracking items.

**Unit of Measurement:** Whether you're dealing with pounds, cases, liters, or individual units, be consistent with your measurements. This ensures accuracy when calculating stock levels and reorder quantities.

**Par Levels and Reorder Points:** Par levels are the minimum amount of stock you should have on hand at any given time. Reorder points are the stock levels at which you need to place a new order. Setting these levels helps prevent stockouts and overstocking.

**Supplier Information and Pricing:** Include details about your suppliers, such as contact information and pricing. This makes it easy to reorder items and compare prices from different suppliers.



## Why Each Component Matters

Each component of your inventory master sheet plays a critical role in managing your stock:

- **Categories:** Categorizing items simplifies tracking and reporting, making it easier to identify trends and spot issues.
- **Descriptions and SKU Numbers:** Accurate descriptions and SKUs prevent confusion and ensure that the correct items are ordered and received.
- **Units of Measurement:** Consistent measurements allow for accurate stock counts and help in calculating food costs and portions.
- **Par Levels and Reorder Points:** These help maintain optimal inventory levels, reducing the risk of running out of stock or over-purchasing.
- **Supplier Information:** Keeping supplier details handy streamlines the ordering process and can lead to better pricing negotiations.



The way you structure your inventory master sheet will significantly impact its usability. Here are some best practices:

- **Use Clear Headings and Subheadings:** Organize your sheet with clear headings for each category and subheadings for specific items. This makes it easy to navigate and find information quickly.
- **Include Calculations:** Automate calculations for total stock value, reorder quantities, and usage rates within your sheet to save time and reduce errors.
- **Color Coding:** Use color coding to highlight critical items, such as those that are running low or are high-cost, to draw attention to important data.

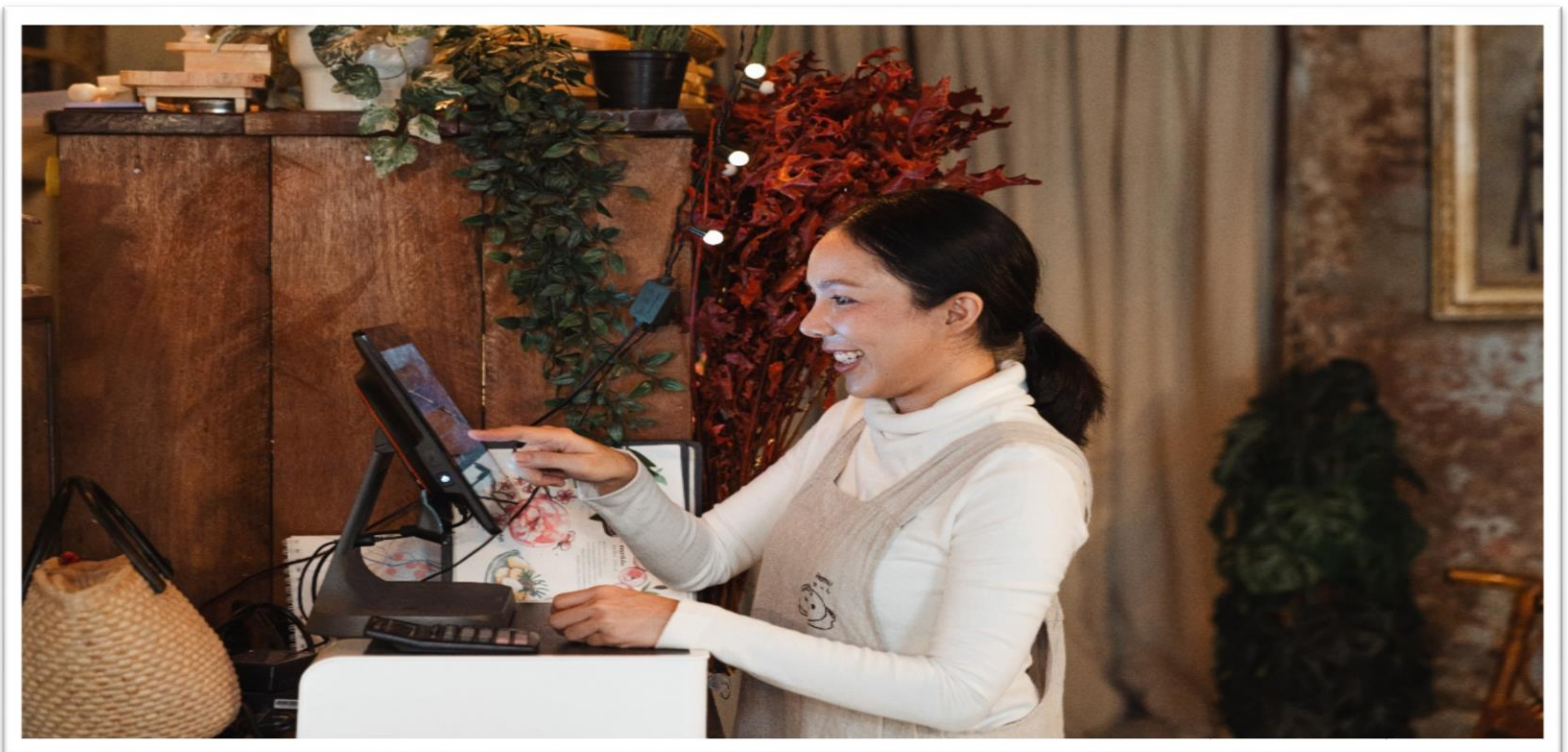
# Chapter 3: Step-by-Step Guide to Creating Your Master Sheet

## Tools and Software Options

Before you start building your inventory master sheet, you need to choose the right tool. Here are some options:

- **Excel and Google Sheets:** These are popular tools for creating inventory sheets because they are flexible and easy to use. You can create custom templates, use formulas for calculations, and share your sheet with your team.
- **Specialized Inventory Software:** There are numerous software solutions designed specifically for restaurant inventory management. These tools often come with features like automated stock counts, integration with POS systems, and reporting capabilities.

Each tool has its pros and cons, depending on the size and complexity of your restaurant. Excel and Google Sheets are cost-effective and highly customizable, while specialized software offers more advanced features but may come with a higher price tag.





## Templates and Customization

Once you've chosen your tool, you can start building your master sheet. Here's how to get started:

- **Use Existing Templates:** Many software solutions and online resources offer ready-made templates that you can customize to suit your needs. These templates often include standard inventory categories and basic formulas.
- **Customize to Fit Your Needs:** Tailor the template to your restaurant by adding specific categories, adjusting units of measurement, and including any unique items you stock.

## Gathering and Entering Data

Accurate data entry is crucial for effective inventory management. Here's how to do it:

- **Conduct a Physical Inventory Count:** Before entering data, conduct a thorough inventory count. This involves physically counting all stock on hand, including items in storage and on display.
- **Record Data in Your Master Sheet:** Enter the data into your master sheet, making sure to include all relevant information, such as item descriptions, quantities, and units of measurement.
- **Double-Check for Accuracy:** Errors in data entry can lead to costly mistakes. Double-check your entries for accuracy and consistency.

## Finalizing Your Master Sheet

Before you start using your master sheet, take the time to finalize it:

- **Review and Validate Data:** Go through your master sheet with your team to ensure all data is accurate and complete.
- **Seek Feedback:** Get feedback from your staff on the usability of the sheet. Make any necessary adjustments to improve its functionality.

# Chapter 4: Tips for Accurate Data Entry

## Best Practices for Data Collection

Accurate data collection is the foundation of effective inventory management. Here are some best practices:

- **Conduct Regular Inventory Counts:** Regular counts help you keep track of what's in stock and identify discrepancies early. Depending on your restaurant's size and turnover, counts should be done weekly, bi-weekly, or monthly.
- **Standardize Data Entry Procedures:** Create standardized procedures for data entry to ensure consistency. This might include guidelines on how to describe items, what units of measurement to use, and how to handle special cases like partial inventory counts.

## Avoiding Common Mistakes

Mistakes in data entry can lead to significant issues. Here's how to avoid them:

- **Train Your Staff:** Proper training is essential for accurate data entry. Make sure your staff understands the importance of accuracy and knows how to use your inventory tools correctly.
- **Use Clear Descriptions and Consistent Units:** Avoid vague descriptions and inconsistent units of measurement. This reduces the risk of confusion and errors during inventory counts and reordering.

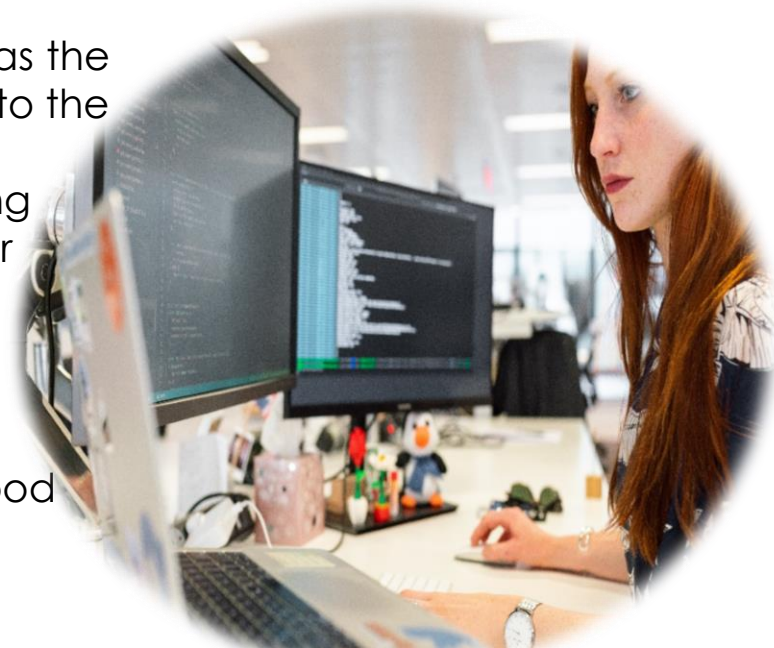
## Training Your Staff

Your inventory management system is only as good as the people using it. Here's how to ensure your staff is up to the task:

- **Conduct Regular Training Sessions:** Regular training ensures that all staff members are up to date on your inventory procedures and understand their role in maintaining accuracy.

- **Create a System of Checks and Balances:**

Implement a system where multiple team members review and verify data entry. This reduces the likelihood of errors going unnoticed.



# Chapter 5: Automating Your Inventory Process

## The Benefits of Automation

Automation can revolutionize your inventory management by reducing manual work and minimizing errors. Here's how:

- **Time Savings:** Automation eliminates the need for manual data entry and calculations, freeing up time for other tasks.
- **Improved Accuracy:** Automated systems reduce the risk of human error, ensuring that your inventory data is always accurate.
- **Real-Time Updates:** Automated systems can provide real-time updates on inventory levels, helping you make informed decisions quickly.

## Choosing the Right Software

When choosing inventory management software, consider the following factors:

- **Ease of Use:** The software should be user-friendly and easy for your staff to learn and use.
- **Integration with Existing Systems:** Look for software that integrates with your POS system, accounting software, and other tools you use.
- **Cost:** Consider the total cost of ownership, including subscription fees, setup costs, and training expenses.

## Implementing Automation in Your Restaurant

Transitioning to an automated inventory system can be challenging. Here's how to do it smoothly:

- **Start with a Pilot Program:** Implement the new system in one area of your restaurant first to work out any kinks before rolling it out across the entire operation.
- **Train Your Staff:** Provide comprehensive training on the new system, including how to use it, troubleshoot common issues, and access support.
- **Monitor and Adjust:** Keep a close eye on how the new system is working and make adjustments as needed to improve performance and user experience.



# Chapter 6: Regular Updates and Maintenance

## Why Regular Updates Are Crucial

Your inventory master sheet is a living document that needs regular updates to remain effective. Here's why:

- **Reflecting Changes in Stock Levels:** Regular updates ensure that your inventory sheet accurately reflects your current stock levels, helping you avoid stockouts or overstocking.
- **Adjusting to Changes in Demand:** As your menu changes or customer preferences shift, your inventory needs will change as well. Regular updates help you adapt to these changes.

## Scheduling Regular Inventory Audits

Regular audits help you maintain the accuracy of your inventory master sheet. Here's how to schedule them:

- **Weekly Audits:** For high-turnover items, conduct weekly audits to ensure accuracy.
- **Monthly Audits:** For less frequently used items, monthly audits may be sufficient.
- **Annual Reviews:** Conduct a comprehensive review of your entire inventory system once a year to identify areas for improvement.





## Adjusting Your Master Sheet Over Time

As your restaurant evolves, so will your inventory needs. Here's how to adjust your master sheet accordingly:

- **Add New Items and Categories:** As you introduce new menu items or start working with new suppliers, update your master sheet to include them.
- **Remove Obsolete Items:** Periodically review your sheet and remove items that you no longer stock or use.

## Troubleshooting and Continuous Improvement

Even with the best system in place, issues can arise. Here's how to troubleshoot and continuously improve your inventory management process:

- **Identify and Address Problems Quickly:** If you notice discrepancies or issues, investigate and resolve them as quickly as possible.
- **Use Data to Drive Improvements:** Regularly analyze your inventory data to identify trends and areas for improvement. Use this information to make informed decisions about purchasing, stocking, and managing your inventory.

The background image shows a modern restaurant interior. A woman with dark hair, wearing a yellow t-shirt and a patterned skirt, is sitting at a wooden table in the foreground, looking towards the camera. The restaurant has a dark, moody atmosphere with blue walls and a polished floor. Several unique, glowing pendant lights with a leaf-like or fan-like design are suspended from the ceiling. In the background, there is a white counter, possibly a bar or service area, and a kitchen area with various equipment. The lighting is warm and focused on the tables and the woman.

## Conclusion

Effective inventory management is crucial to the success of any restaurant. By following the steps outlined in this guide, you can create and maintain an inventory master sheet that will help you control costs, reduce waste, and improve profitability. Remember, the key to successful inventory management is consistency.

Regularly update and maintain your inventory master sheet, and make use of automation tools to streamline the process. With the right system in place, you'll have more time to focus on what really matters—delivering an exceptional dining experience to your customers.